

 **guidely**

IBPS PO Prelims 2021

Free Memory Based Mock Test – 2

Held On 4th Dec 2021

Take Online Mock Test & Also
Download it as PDF

Click the Link Given or Visit : www.guidely.in



Note: You can also take this Memory Based Questions asked in IBPS PO Pre 2021 Exam Held on 04th Dec as Online Mock Test, [Click Here to Take Online Mock Test](#)

Grand Bundle PDF Course 2021

Exams Covered:

SBI Clerk | SBI PO | IBPS RRB PO |
IBPS RRB Clerk | IBPS PO | IBPS Clerk

Seperate PDF Course for All Major Bank pre + Mains Exams

- Total No.of Ques: 40,000+
- Question in Bilingual (Eng & Hindi)
- Answers With Detailed Video Solution
- Provides you 50 days Study Planner for each exams
- Covers All Types of Questions in Each Topic
- Questions in Exact Exam Level
- All Our PDFs are Downloadable
- 100% Satisfaction Assured & It's Worthy for your money
- Download as PDF & also take Quiz with Timer

 **guidely**

Grab It Now

English Language

Directions (1-7): Read the following passage carefully and answer the following questions.

In less than two weeks, countries will meet for the global climate change negotiations at CoP-26. India is one of the most vulnerable, with its farmers facing the heat, quite literally. Higher ambient temperatures, less predictable rains, frequent droughts and cyclones will only worsen in the years ahead, increasing the vulnerability of Indian farmers. The Green Revolution that once helped India overcome a food crisis is reaching its limits. Its impact in rain-fed areas remains marginal. Even in irrigated areas, a typical farmer now uses 3.5 times more fertilizer than in 1970 to get the same output. Ironically, as much as 78% of this fertilizer is lost to the environment, causing soil, air and water pollution. Consequently, income growth in agriculture is the slowest among all sectors of India's economy. Further, while input-intensive agriculture has made us calorie-secure, about 22% of adults are underweight and 38% and 59% of children under the age of five are stunted and anaemic.

Clearly, India needs more than doubling farmers' income to solve its multidimensional food and agriculture crisis. Sustainable agriculture may hold the key. In a report, the Council on Energy, Environment and Water (CEEW) identified 16 sustainable agriculture practices (SAPs), such as organic farming, natural farming, integrated farming systems, agroforestry and precision farming. These could be economically

remunerative, socially inclusive and environmentally **benign**. A few states are already at the _____ of this revolution. Sikkim is a 100% organic state, and Andhra Pradesh aims at 100% natural farming by 2027.

Yet, sustainable agriculture remains at the margins and no single SAP has been adopted by more than 4% of farmers. Support from the Centre is limited. India's National Mission on Sustainable Agriculture receives only 0.8% of the agricultural budget of ₹1.42 trillion. The lack of state support limits the mainstreaming of sustainable agriculture. Despite the gaps, there is emerging evidence on the impact of SAPs on incomes, yields, nutrition and the environment. Natural and organic farming have improved farmers' net

income by reducing input costs and increasing crop diversification. They have raised annual farm output by unlocking additional cropping seasons in rain-fed areas. Some practices are also helping improve farm resilience against climate change. For instance, in 2018, naturally-farmed paddy and banana fields withstood heavy cyclones in Andhra Pradesh, whereas adjoining fields with conventionally harvested crops were devastated.

India should start promoting sustainable agriculture, particularly in rain-fed areas—home of 60% of Indian farmers. Rain-fed farmers practise low-resource agriculture, have low productivity and stand to be the chief gainers from this transition. Further, SAPs could enable

higher crop diversity and intensity, leading to improved nutrition security and incomes for small and landless farmers.

1. What factors increase the vulnerability of Indian farmers according to the passage?

- I. Low level of rains
 - II. Recurring droughts and cyclones
 - III. Higher room temperature
- A. Both I and III
B. Only II
C. Both I and II
D. Both II and III
E. All A, B, C

2. What causes soil, air and water pollution according to the context of the passage?

- A. Excessive use of chemical fertilizers.
- B. Industrial dumping and local waste disposal
- C. Decrement in the soil fertility
- D. All the above
- E. None of the above

3. Which of the following statements is/are true to the context of the passage?

- I. Sikkim is a 100% organic state, and Arunachal Pradesh aims at 100% natural farming by 2027.
 - II. About 22% of adults are overweight and 38% and 59% of children under the age of five are stunted and anaemic.
 - III. Sustainable agriculture practices have been adopted by less than 4% of farmers.
- A. Only III

- B. Both I and II
- C. Both II and III
- D. Both I and III
- E. Only I

4. How did natural and organic farming have improved farmers' net income?

- A. By improving farm resilience against climate change.
- B. By reducing input costs and increasing crop diversification.
- C. By raising annual farm input by unlocking additional cropping seasons in rain-fed areas.
- D. Both A and B
- E. All A, B and C

5. Find out the erroneous option.

- A. India should start promoting
- B. Sustainable agriculture, particularly
- C. in rain-fed areas—home of
- D. 60% of Indian farmers.
- E. No error

6. Which of the following is the synonym of the highlighted word "benign"?

- A. Degrade
- B. Gentle
- C. Helpful
- D. Harmful
- E. None of the above

7. Which of the following words will perfectly fit in the given blank?

- A. Vexation
- B. Paucity

- C. Vanguard
- D. Verge
- E. None of the above

Directions (8-13): The passage given below has six blanks in it. Read the passage carefully and fill the blanks with the words given in the options below to complete the sentences and form a coherent paragraph.

Afghanistan's future and any infrastructure on its territory that promotes cross-border terror are ___ (A) ___ to be high on the agenda of the BRICS national security advisors' meeting scheduled in August. The national security advisors (NSAs) will ___ (B) ___ BRICS counter-terror action plan and that will be among the key deliverables of the BRICS Summit being held under India's ___ (C) ___ early next month, people aware of the matter said.

The NSA meet has acquired special ___ (D) ___ amid Taliban's takeover of power in Kabul, according to persons familiar with the process. India, Russia and China--three of the five BRICS nations-- have wide-ranging ___ (E) ___ in Afghanistan. While China has welcomed Taliban takeover, India is in wait-and-watch mode and favours an inclusive government that respects the rights of the minorities and women.

As for Russia, while it is ___ (F) ___ to work with a Taliban government in Kabul, the ban on the insurgents group is yet to be lifted by Moscow, and it is awaiting security guarantees from the regime.

8. Which of the following given words will make the sentence meaningful by filling in the blank (A)?

- A. Slate
- B. Foreseen
- C. Understood
- D. Expected
- E. Projected

9. Find the most suitable word for the blank labeled (B).

- A. Contest
- B. Brood
- C. Adopt
- D. Adept
- E. Legalize

10. Which word will be the best fit for blank (C) from the words given below?

- A. Aegis
- B. Chairship
- C. Mentoring
- D. Authority
- E. Regulation

11. Choose the best option for blank (D) from the options given below

- A. Significance
- B. Position
- C. Prior
- D. Willingness
- E. Discussion

12. Which of the following will best complete the blank (E) to make a meaningful sentence?

- A. Interest
- B. Infrastructure
- C. Dues
- D. Stocks
- E. Stakes

13. Which word best completes the blank (F) as given above?

- A. Negating
- B. Willing
- C. Instigating
- D. Glad
- E. None of the above

Directions (14-18): In the questions below, a sentence is given with five words numbered and highlighted in bold. From the options, choose the pair of words that should be interchanged in order to make the sentence grammatically and meaningfully correct.

14. The painting **piling**(A) Benjamin for some 20 years of his life, and, as he **describes**(B) it, pictures the angel of history being blown backward into the future by the **forces**(C) of progress **accompanied**(D) ruins at his feet.

- A. A-D
- B. C-D
- C. A-C, B-D
- D. A-B, C-D
- E. B-D

15. While the (A) **reveal** on incentives and (B) **previous** is important (C) **motivation** attempts to link training to performance (D) **emphasis** implementation challenges.

- A. CD
- B. AB & BD
- C. AD & BC
- D. BD
- E. No interchange required

16. The SEBI move to (A) **trigger** the investment rules for multicap funds will now (B) **tweak** some effects in the domestic equity market, with the small caps (C) **likely** to see (D) **tremendous** buying pressure.

- A. AC & BD
- B. BD
- C. AB
- D. CD
- E. No interchange required

17. Physics has **proposition**(A) for over a century with the **struggled**(B) that **passive**(C) an elementary particle like a photon or electron isn't a **observing**(D) process.

- A. A-D
- B. C-D
- C. A-C, B-D
- D. A-B, C-D
- E. B-D

18. The brokerages have attributed their decision to **concerns a)** that **demand b)** is unlikely to recover in the upcoming season,

while regulatory **competition c)** and increased **changes d)** will continue to weigh on the stock.

- A. a-b
- B. b-d
- C. c-d
- D. a-c
- E. No change required

Directions (19-22): In the following questions, a sentence is given with two blanks in it. Choose the correct pair of words that fits correctly in the blanks and form a meaningful sentence. If none of the combinations is correct, choose option E 'none of these' as your answer.

19. The constitutional parameters in terms of the _____ and constitutional values of secularism and a welfare state are very clear and should be strictly _____ to in the appointment of judges.

COLUMN I	COLUMN II
a) culmination	d) dissociated
b) cessation	e) adhered
c) preamble	f) isolated

- A. a-d
- B. b-f
- C. a-f
- D. c-e
- E. a-e

20. The virtual world is full of unsupervised “vacations” and “playgrounds” with other children and, potentially, less than

_____ adults, sometimes posing _____ -
-as children.

COLUMN I	COLUMN II
a) devious	d) covertly
b) vicious	e) anonymously
c) scrupulous	f) secretly

- A. c-e
- B. a-f
- C. b-d
- D. None of the above
- E. a-f

21. Dream 11, a fantasy sports platform, has _____ its operations in Karnataka after its users in the State claimed that they are _____ about their safety.

COLUMN I	COLUMN II
A. adjourn	D. concerned
B. suspended	E. worried
C. discontinued	F. distress

- A. a-f
- B. b-d
- C. c-f
- D. b-f
- E. a-e

22. Government hospitals in Karnataka are now facing an _____ shortage of basic drugs including paracetamol, antibiotics and

antihistamine and are being _____ to write prescriptions for

patients to buy the same from outside.

COLUMN I	COLUMN II
A. acute	D. compelled
B. high	E. adoring
C. awful	F. forced

- A. b-f
- B. b-d
- C. c-e
- D. c-a
- E. a-d

Directions (23-26): In the following questions two columns are given containing three Sentences/phrases each. A sentence/phrase from the first column may or may not connect with another sentence/phrase from the second column to make a grammatically and contextually correct sentence. Each question has five options, four of which display the sequence(s) in which the sentences/phrases can be joined to form a grammatically and contextually correct sentence. If none the options given forms a correct sentence after combination then mark option (E) i.e. "None of these" is your answer.

23.

COLUMN I	COLUMN II
A. The controller General of Accounts (CGA)	D. but the capital component rose 26%.

will release

B. Total expenditure till June was almost flat since a year ago

C. Bharti Airtel Ltd board approved a proposal to rise as much as ₹21,000 crore by selling stocks

- A. AF
- B. AF & BD
- C. BD & CE
- D. CE
- E. AE, BD & CF

24.

COLUMN I	COLUMN II
A. The Central Board of Direct Taxes (CBDT) gave extra time to taxpayers to make payments without having to pay	D. stopped due to protests by local villagers, said the second person, who also did not want to be named.

E. to existing shareholders, as the telecom operator seeks to expand its network amid intense competition with Reliance Jio Infocomm Ltd.

F. the central government's spending and revenue data as of July on the last day of August.

additional amounts	
B. India's first-quarter gross domestic product (GDP) data expected would be an important	E. than year-long stretch of deleveraging, as stock prices nearly doubled from last year's lows.
C. The number of companies with pledged promoter shares fell in the June quarter, continuing their more	F. reference point for the markets and even policymakers to gauge the economy's rebound in FY22.

- A. AD
 B. AF & CE
 C. BF & CE
 D. AD, BF & CE
 E. BD & CF

25.

COLUMN I	COLUMN II
A. Silver medallist Bhavina Patel received a congratulatory call from Prime Minister Narendra Modi	D. taking the total number of cases it is investigating to 28, that

	has also created a record.
B. Young people today are willing to take the risk "to do or join a start-up and the start-up culture	E. youth focusing on excellence instead of being ready to accept mediocrity.
C. The CBI on Sunday filled seven more FIRs on the post-poll violence in West Bengal,	F. after winning a historic medal in Para Table Tennis at the 2020 Paralympics Games in Tokyo.

- A. AF & BD
 B. AF
 C. BE & CF
 D. BD
 E. AF, BD & CE

26.

COLUMN I	COLUMN II
A. Five truckers transporting coal were killed, and	D. when it crash landed on May 6 at the Gwalior

their vehicles	airport.
B. The Narcotics Control Bureau (NCB) has arrested actor Armaan Kohli in connection with a drugs case.	E. the company may utilise the proposed capital mop-up for the upcoming 5G spectrum auctions, expected at year and.
C. According to some analysts and market trackers, apart from the investment to develop 5G technology,	F. He was questioned by the NCB after banned drugs were allegedly recovered from his house here.

- A. CE
- B. BF & CE
- C. BF
- D. AD & CE
- E. AD, BF & CE

Directions (27-30): In the given questions a word is given in the question. You need to understand which sentence(s) have a word that is opposite in meaning to the word given.

27. Concealed

1 Yadav gave me a box and said that it should remain **hidden**.

- 2 Munia turned her head to **expose** the wound on her neck.
 - 3 The detective was **disguised** as an old man in an overcoat.
 - 4 You should not **reveal** the surprise right now.
 - 5 The **secret** was revealed by Mr Seturaman.
- A. Only 2&3
 - B. Only 1&4
 - C. Only 3&5
 - D. Only 1&2
 - E. Only 2&4

28. Adamant

- 1 Rahul's **uncompromising** nature caused him to become less friendly.
- 2 Sharmila was always **unsure** which food to eat.
- 3 The **insecure** foot bridge has been closed for maintenance.
- 4 Geeta was **determined** to try harder next time.
- 5 Their rules and regulations are quite **rigid**.

- A. Only 2&3
- B. Only 1&4
- C. Only 3&5
- D. Only 1&2
- E. Only 2&4

29. Impress

- 1 Sometimes the **influence** of television on children is not good.
- 2 Tarun was **overwhelmed** with guilt after being scolded.
- 3 The manager was highly **disappointed** at his incompetence.
- 4 Juhi was **disheartened** on hearing the news.

5 I was **astonished** by her beauty.

- A. Only 2&3
- B. Only 1&4
- C. Only 3&5
- D. Only 1&2
- E. Only 3&4

30. Hasty

1 The movement of cars is always very **sluggish** at this time of the day.

2 **Slow** movement of the traffic caused huge delays.

3 The **swift** movement of cars is what we need on our roads.

4 Let us take a **brisk** walk around the bungalow.

5 David was **quick** to understand the scenario.

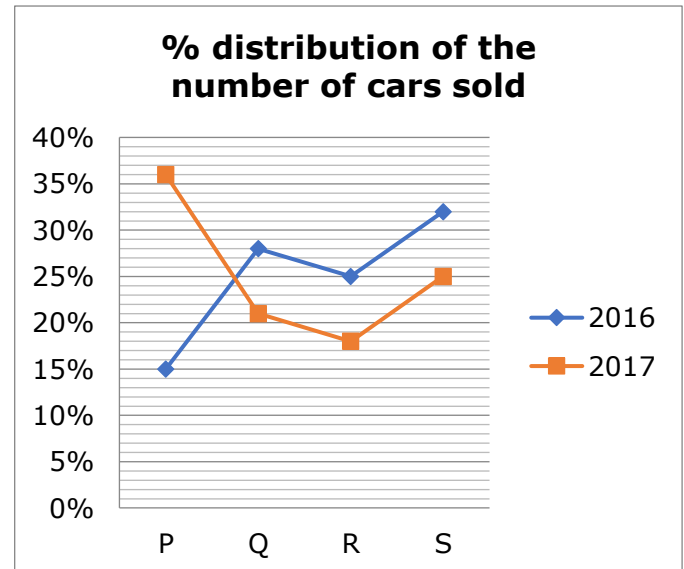
- A. Only 2&3
- B. Only 1&4
- C. Only 3&5
- D. Only 1&2
- E. Only 2&5

Quantitative Aptitude

Directions (31-35): Study the following information carefully and answer the questions.

The line graph shows the percentage distribution of the number of cars sold by four different companies i.e. P, Q, R and S in two different years.

Note: The number of cars sold by four different companies in 2016 and 2017 is 900 and 700 respectively



31) If the number of cars sold by T in 2016 and 2017 is 25% and 33(1/3)% more than the number of cars sold by Q in the same year, then find the total number of cars sold by T in 2016 and 2017 together.

- a) 511
- b) 732
- c) 475
- d) 643
- e) None of these

32) Find the difference between the number of cars sold by Q and S together in 2017 and the number of cars sold by R in 2016.

- a) 108
- b) 75
- c) 97
- d) 84
- e) None of these

33) The number of cars sold by R in 2017 is what percentage of the number of cars sold by P and R together in 2016?

- a) 50%
- b) 35%
- c) 70%
- d) 25%
- e) None of these

34) The average number of cars sold by Q and S together in 2016 is how much more/less than the number of cars sold by R in 2017?

- a) 175 less
- b) 116 more
- c) 162 less
- d) 144 more
- e) None of these

35) If the ratio of the number of cars sold to unsold by P in 2016 is 15:7 respectively and the number of cars sold to unsold by P in 2017 is 7:4 respectively, then find the ratio of the number of cars manufactured by P in 2016 and 2017?

- a) 7:6
- b) 5:4
- c) 1:2
- d) 3:2
- e) None of these

Directions (36-40): Study the following information carefully and answer the questions.
 The given table chart shows the total number of watches (analog and digital) manufactured in five different years i.e. 2019, 2020, 2021, 2022 and 2023.

Years	The total number of watches manufactured	The number of digital watches manufactured
In 2019	960	440
Till 2020	2010	840
Till 2021	3210	1560
Till 2022	4450	2400
Till 2023	5530	3200

Note: The total number of watches manufactured = The number of analog watches manufactured + The number of digital watches manufactured.

36) Find the ratio of the number of digital watches manufactured in 2020 and 2023 together to the total number of watches manufactured in 2023?

- a) 10:9
- b) 6:5
- c) 7:3
- d) 12:7
- e) None of these

37) If 15% of the total number of watches manufactured in 2021 are defective and the number of non-defective digital watches manufactured in 2021 is 410 more than the total number of defective watches manufactured in 2021, then find the number of non-defective analog watches manufactured in 2021.

- a) 410
- b) 380
- c) 430
- d) 350
- e) None of these

38) The number of analog watches manufactured in 2019 and 2021 together is how much percentage more than the number of digital watches manufactured in 2023?

- a) 10%
- b) 15%
- c) 40%
- d) 25%
- e) None of these

39) If the total number of watches manufactured in 2019 is 20% more than the total number of watches manufactured in 2018 and the ratio of the number of digital watches manufactured in 2018 to 2019 is 12:11 respectively, then find the number of analog watches manufactured in 2018?

- a) 480
- b) 320
- c) 540
- d) 600
- e) None of these

40) Find the sum of the average number of watches manufactured in 2022 and the average number of digital watches manufactured in 2019 and 2020 together?

- a) 1040
- b) 960
- c) 1200
- d) 810
- e) None of these

Directions (41-45): In each of the following questions are given. You have to solve both the questions are given. You have to solve both the equations to find the relation between x and y.

41)

I) $5x^2+6x-27=0$

II) $y^2-19y+60=0$

- a) $x > y$
- b) $x \geq y$
- c) $x = y$ (or) relationship can't be determined.
- d) $x < y$
- e) $x \leq y$

42)

I) $x^2-9x-136=0$

II) $y^2+23y+120=0$

- a) $x > y$
- b) $x \geq y$
- c) $x = y$ (or) relationship can't be determined.
- d) $x < y$
- e) $x \leq y$

43)

I) $x^2-14x+48=0$

II) $2y^2+3y-77=0$

- a) $x > y$
- b) $x \geq y$
- c) $x = y$ (or) relationship can't be determined.
- d) $x < y$
- e) $x \leq y$

44)

I) $x^2+13x+40=0$

II) $y^2 + 17y + 60 = 0$

- a) $x > y$
- b) $x \geq y$
- c) $x = y$ (or) relationship can't be determined.
- d) $x < y$
- e) $x \leq y$

45)

I) $2x^2 + 13x + 20 = 0$

II) $y^2 - 25y + 84 = 0$

- a) $x > y$
- b) $x \geq y$
- c) $x = y$ (or) relationship can't be determined.
- d) $x < y$
- e) $x \leq y$

46)

I) $x^2 + 21x + 80 = 0$

II) $y^2 - 8y - 65 = 0$

- a) $x > y$
- b) $x \geq y$
- c) $x = y$ (or) relationship can't be determined.
- d) $x < y$
- e) $x \leq y$

Directions (47-51): What will come in place of question mark (?) in the following number series?

47) 116, 139, 120, 137, ?, 135

- a) 130
- b) 121
- c) 135
- d) 124
- e) 122

48) 12, 23, 44, 85, 166, ?

- a) 245
- b) 172
- c) 327
- d) 294
- e) 316

49) 71, 71.4, 72.2, 73.8, ?, 83.4

- a) 77
- b) 78
- c) 76
- d) 79
- e) 75

50) 54, 56, ?, 68, 84, 116

- a) 64
- b) 60
- c) 58
- d) 62
- e) 66

51) 72, 36, 54, 135, ?, 2126.25

- a) 270
- b) 202.5
- c) 540
- d) 337.5
- e) 472.5

Directions (52-56): Read the following information carefully and answer the questions. Ratio of the number of tablets to laptops sold in shop A is 12:7 respectively. The number of desktops sold in shop A is $33\frac{1}{3}\%$ of the

number of tablets sold in the same shop. In shop B, the number of tablets and desktops sold is 50 less and 10 more than that of the number of laptops sold. The average number of desktops and laptops sold in shop A is 110 and the number of tablets sold in shop B is 150. Ratio of the number of tablets sold in shops A to C is 4:5 respectively. The number of tablets and laptops sold in shop C is 66.67% more and 16.67% less than the number of desktops sold in the same shop.

52) If the number of desktops sold in shop D is 28.56% less than the number of laptops sold in shop A, which is 25% of the total number of tablets, desktops and laptops sold by shop D, then find the number of tablets and laptops sold in shop D.

- a) 160
- b) 420
- c) 300
- d) 280
- e) None of these

53) Find the ratio of the number of tablets and desktops sold in shop A to the number of tablets and desktops sold in shop C?

- a) 2:3
- b) 5:7
- c) 9:8
- d) 3:4
- e) None of these

54) Find the average number of tablets sold in shops A, B and C together.

- a) 170
- b) 320
- c) 110
- d) 230
- e) None of these

55) Out of the total number of tablets, desktops and laptops sold in shop B, $\frac{5}{7}$ of them sold to males and the remaining sold to females, then find the total number of tablets, desktops and laptops sold in shop B to females?

- a) 140
- b) 160
- c) 120
- d) 100
- e) None of these

56) Find the difference between the number of tablets sold in shops B and C together and the average number of laptops sold in shops A and B together?

- a) 190
- b) 310
- c) 280
- d) 300
- e) None of these

57) The ratio of the efficiency of A and B is 5:8 and the efficiency of C is 20% less than the efficiency of A. If B alone complete the work in x days and C alone completes the work in (x + 15) days, in how many days A alone completes the work?

- a) 18 days

- b) 21 days
- c) 24 days
- d) 27 days
- e) 30 days

58) A bus covers a certain distance at the speed of 45 kmph in t minutes and a bike covers the same distance at the speed of 54 kmph in $(t - 40)$ minutes. Find the distance covered by bus?

- a) 170 km
- b) 180 km
- c) 175 km
- d) 178 km
- e) 181 km

59) Vessel A and B contains 100 liters and 140 liters respectively and both vessels contains milk and water. If both vessel A and B's mixture are mixed together, then the quantity of water in the resultant mixture is 31.25% of the total quantity of resultant mixture. If the initial quantity of milk in vessel B is 80% more than the initial quantity of water in vessel B, then find the initial quantity of milk in A?

- a) 75 liters
- b) 80 liters
- c) 85 liters
- d) 90 liters
- e) 60 liters

60) Ratio of the radius of the cone and cylinder is 2:1 and the ratio of the volume of the cone and cylinder is 10:9. Find the ratio of the height of the cylinder and cone?

- a) 5:6

- b) 6:5
- c) 4:3
- d) 3:4
- e) 2:1

61) The marked price of the AC is Rs.18000. The shopkeeper offers 10% of the discount on the marked price of the AC and he gets the profit of 8%. If the ratio of the cost price of AC and mobile is 3:2 and the marked price of the mobile is 20% more than its cost price and the shopkeeper sold the mobile at the profit of 10.4%, then find the percentage of discount offered by the shopkeeper on mobile?

- a) 10%
- b) 9%
- c) 8%
- d) 6%
- e) 12%

62) Ratio of the ages of A and B is 5:3 and the ratio of the ages of B and C is 2:3. If the average of the ages of A and B is x years and the average of the ages of B and C is $(x - 2)$ years, then what is the age of A?

- a) 40 years
- b) 45 years
- c) 30 years
- d) 25 years
- e) 50 years

63) The speed of boat A is 50% more than the speed of boat B. If boat A covers 140 km upstream in 14 hours and the speed of stream is

5 kmph, then find the time taken by boat B covers 120 km downstream and 45 km upstream?

- a) 13 hours
- b) 15 hours
- c) 17 hours
- d) 19 hours
- e) 20 hours

64) The compound interest received on Rs.4000 at 12% per annum compounded annually for 2 years is Rs.x. If Rs.5x invested in simple interest scheme at the rate of 20% per annum for 6 years, then find the simple interest received after 6 years?

- a) Rs.6105.6
- b) Rs.6215.6
- c) Rs.6115.6
- d) Rs.6125.6
- e) None of these

65) The ratio of the monthly income of A, B and C is 5:4:7. The expenditure of A is 20% more than that of B and the savings of B is Rs.5000. If the ratio of the expenditure and savings of C is 9:5 and the savings of A is Rs.2000 more than that of B, then find the expenditure of C?

- a) Rs.21500
- b) Rs.22500
- c) Rs.22000
- d) Rs.23500
- e) Rs.24000

Reasoning Ability

Directions (66-70): Study the following information carefully and answer the below questions.

Five persons- G, H, J, K, and V live on five storey building such that the lowermost floor is numbered as one and the topmost floor is numbered as five. They like different fruits- Banana, Mango, Kiwi, Apple, and Guava but not necessarily in the same order.

G lives on an even number floor. Only two floors are between G and the one who likes Banana. V lives immediately above the one who likes Mango. Only two persons live between the one who likes Mango and the one who likes Apple. The one who likes Guava lives immediately below the one who likes Kiwi. J lives immediately below the one who likes Guava. H lives immediately below K.

66) Which of the following fruit is liked by H?

- a) Mango
- b) Banana
- c) Kiwi
- d) Guava
- e) Apple

67) Which of the following statement is true?

- A. J lives on the lowermost floor
 - B. Only one person lives between V and H
 - C. G likes Kiwi
 - D. V does not like Banana
- a) Only A and B
 - b) Only C and D
 - c) Only A and C

- d) Only B and D
- e) All A, B, C, and D

68) How many persons live above the one who likes Kiwi?

- a) Three
- b) Two
- c) Four
- d) Five
- e) One

69) As many persons live above V is the same as persons live below ___?

- a) The one who likes Guava
- b) The one who likes Mango
- c) The one who likes Apple
- d) H
- e) None of the above

70) On which of the following floor does the one who like Mango live?

- a) First
- b) Second
- c) Third
- d) Fifth
- e) Fourth

Directions (71-73): Study the following information carefully and answer the below questions

Six persons- A, B, C, D, E, and F are of different heights. B is taller than E but shorter than F. A is shorter than F but taller than E. D is taller than F. E is not the shortest person. The second

tallest person's height is 183 cm whereas The third shortest person's height is 162cm.

71) If the sum of the heights of F and E is 339 cm and the sum of the height of E and B is 318 cm, then what may be the height of A?

- a) 188 cm
- b) 185 cm
- c) 155 cm
- d) 176 cm
- e) 146 cm

72) How many persons are taller than E?

- a) Five
- b) One
- c) Two
- d) Four
- e) Three

73) As many persons taller than D is the same as persons shorter than ____?

- a) B
- b) A
- c) E
- d) C
- e) F

Directions (74-78): Study the following information carefully and answer the below questions.

Seven persons- L, M, N, O, P, Q, and R are sitting in the linear row but not necessarily in the same order. **Only three of them face north and rest faces south direction.**

M sits on the end of the row. Only three persons are sitting between M and N. N sits third to the left of O, both of them face opposite directions. Only three persons are sitting between O and P. P sits second to the left of Q. R sits to the right of L, both are facing the same direction. P faces the same direction as R.

74) Who among the following person sits second to the left of Q?

- a) The one who sits immediate left of R
- b) The one who sits second to the left of M
- c) O
- d) N
- e) M

75) Who among the following persons are facing the north direction?

- I. The one who sits immediate right of L
 - II. R
 - III. The one who sits immediate left of Q
 - IV. The one who sits second to the left of L
- a) Only I and IV
 - b) Only I and III
 - c) Only III and IV
 - d) Only II and III
 - e) Only I and II

76) What is the position of N with respect to L?

- a) Second to the right
- b) Third to the left
- c) Second to the left
- d) Third to the right
- e) Fourth to the left

77) How many persons are sitting between L and R?

- a) Two
- b) Three
- c) One
- d) Four
- e) None

78) Which of the following statement is true?

- a) More than three persons sit to the left of L
- b) No one sits between Q and O
- c) Only one person sits between L and P
- d) P and N face the same direction
- e) All the statement is true

Direction (79-81): Study the following information carefully and answer the below questions

U and V are the kids of D who does not have any son. V is an unmarried person in the family. I is the son-in-law of D. M is the sister-in-law of U. Q is the mother of M. K is the daughter of I. T is the aunty of K. Q has only two kids. S is the son-in-law of Z who is a female member. D and Q are of the opposite gender. D does not have more than three children. Not more than 10 members are there in the family.

79) Which of the following statement is true?

- a) Z is the mother of M.
- b) I is the spouse of S
- c) T is the sister of I
- d) K is the niece of M
- e) All the statement is true

80) How Z is related to K?

- a) Father
- b) Grandfather
- c) Can't be determined
- d) Grandmother
- e) Mother

81) Who among the following persons is/are aunty of K?

- a) M
- b) V
- c) T
- d) Both a and b
- e) All a, b, and c

Directions (82-86): Study the following information carefully and answer the below questions.

Six persons- U, V, W, X, Y, and Z are preparing different fruit jams on two different dates of either 2 or 19 of three different months September, October, and November of the same year. They prepared different types of fruit jams- Conserve, Marmalade, Jelly, Compote, Butter, and Preserves but not necessarily in the same order.

Y prepared in the odd number date of the month which has 30 days. Two persons are prepared between Z and Y. The one who prepared Marmalade is prepared immediately before Z. No one prepared between Z and the one who prepared butter jam. V prepared immediately before X but after the one who prepared Preserves jam. W prepared neither

Marmalade nor Butter jam. The one who prepared Conserve is prepared immediately before U. Z prepares neither Conserve nor Marmalade. X does not prepare Jelly jam.

82) In which of the following month and date does V prepare the jam?

- a) September 19
- b) November 19
- c) November 2
- d) October 19
- e) October 2

83) Which of the following statement is true?

- I) X prepared Compote jam
- II) Only two persons prepared between W and Z
- III) W prepared in the even number date
- IV) No one prepared after the one who prepared Butter jam.

- a) Only (I) and (III)
- b) Only (I) and (IV)
- c) Only (II) and (III)
- d) Only (II) and (IV)
- e) All (I), (II), (III) and (IV)

84) Which of the following jam is prepared by W?

- a) Marmalade jam
- b) Conserve jam
- c) Jelly jam
- d) Butter jam
- e) Preserves jam

85) How many persons prepared their jam before V?

- a) One
- b) Three
- c) Two
- d) Four
- e) None

86) Four of the following five are alike in a certain way and thus form a group. Find the one that does not belong to the group?

- a) U
- b) The one who prepared butter jam
- c) W
- d) The one who prepared Jelly jam
- e) X

87) If the odd digits are subtracted by “1” and the even digits are subtracted by “2” from the number “54938267” then which of the following digits are repeated more than one time?

- a) Only “6”
- b) Only “2”
- c) All “2”, “4” and “6”
- d) Only “2” and “4”
- e) Only “4” and “6”

88) If the vowels in the word “PREVIOUS” are changed to the next letter and consonants are changed to the previous letter in the alphabetical series then they are arranged in alphabetical order from the left end. which of the following letter is the fourth from the right end?

- a) O
- b) P
- c) U

- d) R
- e) Q

89) How many pairs of letters are there in the word “SOMETHING” each of which has as many letters between them in the word as in the English alphabetical series (both forward and backward direction)?

- a) One
- b) Two
- c) Three
- d) More than three
- e) None

90) If it is possible to make a meaningful word from the first, third, seventh, and eighth letters of the word “PERSUADE”. Then which of the following letter is the first letter of the word? If more than one such word can be made, then give “X” as the answer, and if no such word can be formed then give “Z” as the answer?

- a) D
- b) P
- c) R
- d) X
- e) Z

Directions (91-95): Study the following information carefully and answer the below questions.

Eight persons- A, B, C, D, E, F, G, and H are born in different years- 1945, 1958, 1968, 1976, 1985, 1989, 1994, and 1998 but not necessarily in the same order.

Note: Their ages are calculated based on the year 2021. No two persons are of the same ages.

The sum of the ages of A and F is 99. The difference between the ages F and C is 13 years. The number of persons born between F and B is one more than the number of persons born between C and A. The sum of the ages of E and G is 85 years. G is born in the odd-numbered year. D is younger than H.

91) As many persons are elder than E is same as persons younger than___?

- a) The one who born immediately before D
- b) The one who born in 1958
- c) G
- d) A
- e) C

92) Four of the following are alike in a certain way and hence form a group. Who among the following one does not belong to the group?

- a) 1945-E
- b) 1958-H
- c) 1968-A
- d) 1998-B
- e) 1989-D

93) What is the sum of the ages of E and D?

- a) 76
- b) 90
- c) 85
- d) 80
- e) 81

94) In which of the following year does H was born?

- a) 1998
- b) 1994
- c) 1985
- d) 1976
- e) 1968

95) Which of the following statement is true?

- a) Only three persons born between C and G
- b) G was born immediately before D
- c) A born in the odd number year
- d) F born immediately after B
- e) All the statement is true

Direction (96-100): Study the following information carefully and answer the below questions.

In a certain code language,

'Tweety Tom Jerry Popeye' is coded as 'ad xz lt mt',

'Popeye Felix Catman Rob' is coded as 'oz gh pn xz',

'Tom Popeye Mickey Rob' is coded as 'oz vn xz mt',

'Tweety Mickey Felix Catman' is coded as 'gh vn ad pn'

96) What is the code for 'Rob' in the given language?

- a) lt
- b) ad
- c) oz
- d) xz
- e) None of these

97) What is the code for 'Tom Mickey' in the given language?

- a) mt lt
- b) lt oz
- c) vn ad
- d) mt vn
- e) None of the above

98) What does "lt" represent in a code language?

- a) Popeye
- b) Jerry
- c) Tom
- d) Tweety
- e) None of the above

99) If "Felix Tom" represents a code "pn mt" then what does "Catman Popeye" represent in a code language?

- a) xz oz
- b) ad gh
- c) gh xz
- d) xz vn
- e) Either a or c

100) What is the code for 'Mickey Rob Catman'?

- a) ad nb pn
- b) vn gh oz
- c) pn oz vn
- d) oz xz gh
- e) Either b or c

Answer With Explanation

1. Answer: C

Refer to the first paragraph- "India is one of the most vulnerable, with its farmers facing the heat, quite literally. Higher ambient temperatures, less predictable rains, frequent droughts and cyclones will only worsen in the years ahead, increasing the vulnerability of Indian farmers."

From the above quoted lines we can say that option C is the correct answer.

While ambient temperature is the actual air temperature of an environment, room temperature refers to the range of temperatures that most people feel comfortable in. Ambient temperature is measured with a thermometer

while room temperature is based more on feeling.

Therefore statement III is incorrect.

2. Answer: A

Refer to the second paragraph- "Its impact in rain-fed areas remains marginal. Even in irrigated areas, a typical farmer now uses 3.5 times more fertilizer than in 1970 to get the same output. Ironically, as much as 78% of this fertilizer is lost to the environment, causing soil, air and water pollution." From the above quoted lines we can say that option A is the correct answer.

3. Answer: A

Out of the given three statements only III is true to the context of the passage remaining false.

Correct statements-

I. Sikkim is a 100% organic state, and **Andhra Pradesh** aims at 100% natural farming by 2027.

II. About 22% of adults are **underweight** and 38% and 59% of children under the age of five are stunted and anaemic.

4. Answer: D

Options A and B are correct. Refer to the second last paragraph- “Natural and organic farming have improved farmers’ net income by reducing input costs and increasing crop diversification. They have raised annual farm **output** by unlocking additional cropping seasons in rain-fed areas. Some practices are also helping improve farm resilience against climate change.” **From the above quoted lines we can say that option D is the correct answer.**

5. Answer: C

Option C is incorrect because “home of” is incorrect. “Home” should be followed with the preposition “to”.

Correction- in rain-fed areas—home to

6. Answer: B

Benign means gentle and kindly or not harmful in effect. Remaining options are incorrect thus option B is the correct answer.

7. Answer: C

Most apt word for the given blank is “vanguard” which means a group of people leading the way in new developments or ideas.

A few states are already at the **vanguard** of this revolution.

Vexation-a strong feeling of annoyance, displeasure, or hostility.

Paucity- scarcity, shortage

8. Answer: D

Out of the given options, when we understand the meanings, only two options will fit in the blank.

Option (a), Slate (when used as ‘slated to’ means something that is expected in future) and in option (b), Expected will be the best fit as it fits grammatically and also gives the required meaning.

The word Understood is out of context and the other two words ‘foreseen’ and ‘projected’ do not fit the context so can be eliminated.

9. Answer: C

Option (a) contest doesn’t fit contextually as it is not about fighting elections or something.

Option (b) means to think deeply about something or get lost in thoughts which is not the meaning here.

Option (c) is the best option as the passage talks about choosing to take up or follow an action plan. So, adopt explains it the best.

Option (d) adept means highly skilled and is out of context.

Option (e) legalize makes sense but it is not a question of making a law. So, this is eliminated as well.

10. Answer: B

It's a basic rule that when two or more options are similar, both cease to be the correct answer as there is always a better option available that fits contextually.

Options (a) and (c) being similar get eliminated. Also, options (d) and (e) being similar can be ruled out.

Option (b), chairship or more commonly used as chairmanship, fits the best as the passage refers to India that would be the chairperson to the upcoming BRICS summit.

11. Answer: A

Now the issue being discussed is the sudden major shift of power in Kabul which has taken a centre stage.

It is an important issue that means the best word that can describe the same would be option (a) significant.

All other options are inapt.

12. Answer: E

The words preceding the blank are 'wide-ranging', which is a great hint that the word in the blank should be plural. So, options (a) and (b) get eliminated.

It is more of an involvement in terms of investments, business or some common interest which can collectively be known as 'stake'. Dues and Stocks are business specific words that do

not fit in the context. Also, the word stakes, encapsulates all these meanings.

So, option (e) is the correct answer.

13. Answer: B

The last few lines talk about the BRICS countries' reactions to the recent developments in Afghanistan.

While India is in a wait-and-watch mode, Russia is open to discussions and is willing to work with the Taliban. Grammatically, (a) and (d) must be ruled out.

Instigating which means provoking does not reflect the correct meaning here and hence, 'willing to' is the best usage.

14. Answer: A

After rearrangement correct sentence will be "The painting **accompanied** Benjamin for some 20 years of his life, and, as he describes it, pictures the angel of history being blown backward into the future by the forces of progress **piling** ruins at his feet."

15. Answer: C

The sentence conveys that while there is emphasis (there is special importance) to incentives and motivation, the previous attempts to link training to performance revealed implementation challenges. So to make sentence grammatically and contextually correct we need to interchange the positions of words in AD and BC.

16. Answer: C

The sentence is saying that SEBI trying to make small changes (**tweak**) to improve the investment rules for multicap funds will now trigger (to start something) some effects in the domestic equity market, with the small caps likely to see increasing buying pressure. So to make the sentence correct the position of words A and B should be interchanged.

17. Answer: D

After rearrangement correct sentence will be “Physics has **struggled** for over a century with the **proposition** that **observing** an elementary particle like a photon or electron isn’t a **passive** process.”

18. Answer: C

The brokerages have attributed their decision to concerns that demand is unlikely to recover in the upcoming season, while regulatory **changes** and increased **competition** will continue to weigh on the stock.

19. Answer: D

The constitutional parameters in terms of the preamble and constitutional values of secularism and a welfare state are very clear and should be strictly adhered to in the appointment of judges.

Preamble – introduction, preface

Culmination – peak, pinnacle, end

20. Answer: A

The virtual world is full of unsupervised “vacations” and “playgrounds” with other

children and, potentially, less than scrupulous adults, sometimes posing anonymously as children.

Scrupulous – honest, ethical, moral

Vicious – cruel, dangerous, savage

Devious – deceitful, dishonest, immoral

21. Answer: B

; b-d

Dream 11, a fantasy sports platform, has **suspended** its operations in Karnataka after its users in the State claimed that they are **concerned** about their safety.

Suspend – adjourn, halt, discontinue

Concerned – distressed, worried

22. Answer: E

; a-d

Government hospitals in Karnataka are now facing an **acute** shortage of basic drugs including paracetamol, antibiotics and antihistamine and are being **compelled** to write prescriptions for patients to buy the same from outside.

Acute – severe, critical, vital, awful

Compel – force, require

23. Answer: B

; AF & BD

AF: The controller General of Accounts (CGA) will release the central government’s spending and revenue data as of July on the last day of August.

BD: Total expenditure till June was almost flat since a year ago, but the capital component rose 26%.

Statement C is grammatically incorrect. It should have been 'raise' instead of 'rise'.

To raise means to lift or move something or someone upward. It also means to increase. To rise means to move upward or to increase. After the correction, the correct pairs will be AF, BD & CE. But the correct answer is option B.

24. Answer: C

; BF & CE

BF: India's first-quarter gross domestic product (GDP) data expected would be an important reference point for the markets and even policymakers to gauge the economy's rebound in FY22.

CE: The number of companies with pledged promoter shares fell in the June quarter, continuing their more than year-long stretch of deleveraging, as stock prices nearly doubled from last year's lows.

Statements A & D do not make a meaningful pair as they are contextually different.

25. Answer: B

; AF

Silver medallist Bhavina Patel received a congratulatory call from Prime Minister Narendra Modi after winning a historic medal in Para Table Tennis at the 2020 Paralympics Games in Tokyo.

In Statement C, the grammatical error is- 'filled' which will be replaced by 'filed'.

26. Answer: C

; BF

BF: The Narcotics Control Bureau (NCB) has arrested actor Armaan Kohli in connection with a drugs case. He was questioned by the NCB after banned drugs were allegedly recovered from his house here.

In statement E, there's a grammatical error. 'And' will be replaced by 'end' then the correct pairs will be BF & CE.

27. Answer: E

The word concealed means kept secret; hidden. If we check the sentences we can see that in the 2nd and 4th sentences the words expose and reveal are used which are just opposite in meaning to the given word.

Therefore the correct answer is option E.

28. Answer: A

Adamant means refusing to be persuaded or to change one's mind.

The words unsure and insecure used in the 2nd and 3rd sentences respectively are exactly opposite of the given word.

Therefore the correct answer is option A.

29. Answer: E

Impress means make (someone) feel admiration and respect.

In the 3rd and 4th sentences the words disappointed and disheartened are near antonyms of the given word.

Therefore the correct answer is option E.

30. Answer: D

Hasty is an adjective which means done with excessive speed or urgency; hurried.

The words sluggish and slow are just the opposite in meaning of the given word 'hasty' in the question.

Therefore the correct answer is option D.

Directions (31-35):

The number of cars sold by P in 2016 = $900 \times 15/100 = 135$

The number of cars sold by Q in 2016 = $900 \times 28/100 = 252$

The number of cars sold by R in 2016 = $900 \times 25/100 = 225$

The number of cars sold by S in 2016 = $900 \times 32/100 = 288$

The number of cars sold by P in 2017 = $700 \times 36/100 = 252$

The number of cars sold by Q in 2017 = $700 \times 21/100 = 147$

The number of cars sold by R in 2017 = $700 \times 18/100 = 126$

The number of cars sold by S in 2017 = $700 \times 25/100 = 175$

31. Answer: A

The number of cars sold by T in 2016 = $252 \times 125/100 = 315$

The number of cars sold by T in 2017 = $147 \times 133.33/100 = 147 \times 4/3 = 196$

Required total = $315 + 196 = 511$

32. Answer: C

Required difference = $147 + 175 - 225 = 97$

33. Answer: B

The number of cars sold by R in 2017 = 126

The number of cars sold by P and S in 2016 = $135 + 225 = 360$

Required percentage = $126/360 \times 100 = 35\%$

34. Answer: D

The average number of cars sold by Q and S in 2016 = $(252 + 288)/2 = 270$

Required difference = $270 - 126 = 144$ more

35. Answer: C

The number of cars manufactured by P in 2016 = $135 \times 22/15 = 198$

The number of cars manufactured by P in 2017 = $252 \times 11/7 = 396$

Required ratio = $198:396 = 1:2$

Directions (36-40):

The total number of watches manufactured in 2020 = $2010 - 960 = 1050$

The number of digital watches manufactured in 2020 = $840 - 440 = 400$

The number of analog watches manufactured in 2020 = $1050 - 400 = 650$

The total number of watches manufactured in 2021 = $3210 - 2010 = 1200$

The number of digital watches manufactured in 2021 = $1560 - 840 = 720$

The number of analog watches manufactured in 2021 = $1200 - 720 = 480$

The total number of watches manufactured in 2022 = $4450 - 3210 = 1240$

The number of digital watches manufactured in 2022 = $2400 - 1560 = 840$

The number of analog watches manufactured in 2022 = $1240 - 840 = 400$

The total number of watches manufactured in 2023 = $5530 - 4450 = 1080$

The number of digital watches manufactured in 2023 = $3200 - 2400 = 800$

The number of analog watches manufactured in 2023 = $1080 - 800 = 280$

36. Answer: A

The number of digital watches manufactured in 2020 and 2023 = $400 + 800 = 1200$

Required ratio = $1200 : 1080 = 10 : 9$

37. Answer: C

The total number of defective watches manufactured in 2021 = $1200 \times \frac{15}{100} = 180$

The number of non-defective digital watches manufactured in 2021 = $180 + 410 = 590$

The number of defective digital watches manufactured in 2021 = $720 - 590 = 130$

The number of non-defective analog watches manufactured in 2021 = $480 - (180 - 130) = 430$

38. Answer: D

The number of analog watches manufactured in 2019 and 2021 = $520 + 480 = 1000$

Required percentage = $\frac{1000 - 800}{800} \times 100 = \frac{200}{8} = 25\%$

39. Answer: B

The total number of watches manufactured in 2018 = $960 \times \frac{100}{120} = 800$

The number of digital watches manufactured in 2018 = $440 \times \frac{12}{11} = 480$

The number of analog watches manufactured in 2018 = $800 - 480 = 320$

40. Answer: A

The average number of watches manufactured in 2022 = $\frac{1240}{2} = 620$

The average number of digital watches manufactured in 2019 and

2020 = $\frac{440 + 400}{2} = 420$

Required sum = $620 + 420 = 1040$

41. Answer: D

$$5x^2 + 6x - 27 = 0$$

$$5x^2 + 15x - 9x - 27 = 0$$

$$5x(x+3) - 9(x+3) = 0$$

$$x = -3, +9/5$$

$$x = -3, +1.8$$

$$y^2 - 19y + 60 = 0$$

$$y^2 - 15y - 4y + 60 = 0$$

$$y(y-15) - 4(y-15) = 0$$

$$y = +15, +4$$

Hence, $x < y$

42. Answer: B

$$x^2 - 9x - 136 = 0$$

$$x^2 - 17x + 8x - 136 = 0$$

$$x(x-17) + 8(x-17) = 0$$

$$x = +17, -8$$

$$y^2 + 23y + 120 = 0$$

$$y^2 + 15y + 8y + 120 = 0$$

$$y(y+15)+8(y+15)=0$$

$$y=-15, -8$$

Hence, $x \geq y$

43. Answer: A

$$x^2-14x+48=0$$

$$x^2-8x-6x+48=0$$

$$x(x-8)-6(x-8)=0$$

$$x=+6, +8$$

$$2y^2+3y-77=0$$

$$2y^2+14y-11y-77=0$$

$$2y(y+7)-11(y+7)=0$$

$$y=-7, +11/2$$

$$y=-7, +5.5$$

Hence, $x > y$

44. Answer: C

$$x^2+13x+40=0$$

$$x^2+8x+5x+40=0$$

$$x(x+8)+5(x+8)=0$$

$$x=-8, -5$$

$$y^2+17y+60=0$$

$$y^2+12y+5y+60=0$$

$$y(y+12)+5(y+12)=0$$

$$y=-12, -5$$

Hence the relationship between x and y cannot be determined

45. Answer: D

$$2x^2+13x+20=0$$

$$2x^2+8x+5x+20=0$$

$$2x(x+4)+5(x+4)=0$$

$$x=-4, -5/2$$

$$x=-4, -2.5$$

$$y^2-25y+84=0$$

$$y^2-21y-4y+84=0$$

$$y(y-21)-4(y-21)=0$$

$$y=+21, +4$$

Hence, $x < y$

46. Answer: C

$$x^2+21x+80=0$$

$$x^2+16x+5x+80=0$$

$$x(x+16)+5(x+16)=0$$

$$x=-16, -5$$

$$y^2-8y-65=0$$

$$y^2-13y+5y-65=0$$

$$y(y-13)+5(y-13)=0$$

$$y=+13, -5$$

Hence the relationship between x and y cannot be determined

47. Answer: D

$$116+23=139$$

$$139-19=120$$

$$120+17=137$$

$$137-13=124$$

$$124+11=135$$

48. Answer: C

$$12^2-1=23$$

$$23^2-2=44$$

$$44^2-3=85$$

$$85^2-4=166$$

$$166^2-5=327$$

49. Answer: A

$$71+2/5=71.4$$

$$71.4 + 4/5 = 72.2$$

$$72.2 + 8/5 = 73.8$$

$$73.8 + 16/5 = 77$$

$$77 + 32/5 = 83.4$$

50. Answer: B

$$54 + 2^1 = 56$$

$$56 + 2^2 = 60$$

$$60 + 2^3 = 68$$

$$68 + 2^4 = 84$$

$$84 + 2^5 = 116$$

51. Answer: E

$$72 * 0.5 = 36$$

$$36 * 1.5 = 54$$

$$54 * 2.5 = 135$$

$$135 * 3.5 = 472.5$$

$$472.5 * 4.5 = 2126.25$$

Directions (52-56):

Let the number of laptops sold in shop A = $7x$

And the number of tablets sold in shop A = $12x$

The number of desktops sold in shop

$$A = 12x * 1/3 = 4x$$

$$7x + 4x = 110 * 2$$

$$x = 20$$

The number of laptops sold in shop A = $7 * 20 = 140$

The number of tablets sold in shop

$$A = 12 * 20 = 240$$

The number of desktops sold in shop

$$A = 4 * 20 = 80$$

The number of tablets sold in shop

$$C = 240 * 5/4 = 300$$

The number of desktops sold in shop

$$C = 300 * 3/5 = 180$$

The number of laptops sold in shop

$$C = 180 * 5/6 = 150$$

The number of laptops sold in shop

$$B = 150 + 50 = 200$$

The number of desktops sold in shop

$$B = 200 + 10 = 210$$

Shop	Total	Tablets	Desktops	Laptops
A	460	240	80	140
B	560	150	210	200
C	630	300	180	150

52. Answer: C

The number of desktops sold in shop

$$D = 140 * 5/7 = 100$$

The total number of tablets, desktops and

laptops sold in shop D = $100 * 100/25 = 400$

The number of tablets and laptops sold in shop

$$D = 400 - 100 = 300$$

53. Answer: A

The number of tablets and desktops sold in shop

$$A = 240 + 80 = 320$$

The number of tablets and desktops sold in shop

$$C = 300 + 180 = 480$$

Required ratio = 2:3

54. Answer: D

Required average = $(240 + 150 + 300)/3 = 230$

55. Answer: B

The total number of laptops, tablets and

desktops sold in shop B = $150 + 210 + 200 = 560$

The total number of laptops, desktops and tablets sold in shop B to females = $560 \times \frac{2}{7} = 160$

56. Answer: C

The average number of laptops sold in shops A and B = $\frac{140+200}{2} = 170$
 Required difference = $150+300-170 = 280$

57. Answer: C

Efficiency of A and B = 5:8
 Time ratio of A and B = 8:5
 Efficiency of A and C = 100:80 = 5:4
 Time ratio of A and C = 4:5
 Time ratio of A, B and C = 8:5:10
 $\frac{1}{5k} = \frac{1}{x}$
 $5k = x$
 $\frac{1}{10k} = \frac{1}{(x+15)}$
 $10k = x + 15$
 $10k = 5k + 15$
 $k = 3$
 A alone complete the work in $8 \times 3 = 24$ days

58. Answer: B

Distance = $45 \times \frac{t}{60} = \frac{3t}{4}$
 Distance = $54 \times \frac{(t-40)}{60} = \frac{9}{10} \times (t-40)$
 $\frac{3t}{4} = \frac{9t}{10} - 36$
 $36 = \frac{6t}{40}$
 $t = 240$ minutes
 Distance = $3 \times \frac{240}{4} = 180$ km

59. Answer: A

Ratio of the quantity of milk and water in B = 180:100 = 9:5

Milk in B = $\frac{9}{14} \times 140 = 90$
 Water in B = $\frac{5}{14} \times 140 = 50$
 Final quantity of milk and water = $(100 - 31.25):31.25$
 = 11:5

Milk in vessel A = x
 Water in A = $(100 - x)$
 $\frac{(x+90)}{((100-x)+50)} = \frac{11}{5}$
 $1100 - 11x + 550 = 5x + 450$
 $16x = 1200$
 $x = 75$ liters

60. Answer: B

$\frac{(22/7 \times x \times x \times h_1)}{(1/3 \times 22/7 \times 2x \times 2x \times h_2)} = \frac{9}{10}$
 $\frac{h_1}{h_2} = \frac{6}{5}$

61. Answer: C

SP of AC = $18000 \times \frac{90}{100} = \text{Rs.} 16200$
 CP of AC = $\frac{100}{108} \times 16200 = \text{Rs.} 15000$
 CP of mobile = $\frac{2}{3} \times 15000 = \text{Rs.} 10000$
 MP of mobile = $10000 \times \frac{120}{100} = \text{Rs.} 12000$
 SP of mobile = $10000 \times \frac{110.4}{100} = \text{Rs.} 11040$
 Discount = $12000 - 11040 = 960$
 Required % = $\frac{960}{12000} \times 100 = 8\%$

62. Answer: A

A = 5k
 B = 3k
 C = $\frac{3}{2} \times 3k = 4.5k$
 $\frac{(5k+3k)}{2} = x$
 $\frac{(3k+4.5k)}{2} = x - 2$
 $5k + 3k = 3k + 4.5k + 4$
 $k = 8$

$$A = 5 * 8 = 40 \text{ years}$$

63. Answer: C

$$\text{Upstream Speed of boat A} = 140/14 = 10 \text{ kmph}$$

$$\text{Speed of boat A} = 10 + 5 = 15 \text{ kmph}$$

$$\text{Speed of boat B} = 15 * 100/150 = 10 \text{ kmph}$$

$$\begin{aligned} \text{Required time} &= 120/(10 + 5) + 45/(10 - 5) \\ &= 17 \text{ hours} \end{aligned}$$

64. Answer: A

$$CI = 4000 * (1 + 12/100)^2 - 4000 = 1017.6$$

$$SI = 5 * 1017.6 * 20 * 6/100 = \text{Rs.}6105.6$$

65. Answer: B

$$\text{Expenditure of B} = 5y$$

$$\text{Expenditure of A} = 5y * 120/100 = 6y$$

$$(5x - 7000)/(4x - 5000) = 6y/5y$$

$$24x - 30000 = 25x - 35000$$

$$x = 5000$$

$$\text{Income of C} = 7 * 5000 = 35000$$

$$\text{Expenditure of C} = 35000 * 9/14 = \text{Rs.}22500$$

Directions (66-70):

66) Answer: C

67) Answer: A

68) Answer: B

69) Answer: C

70) Answer: E

Floor	Person	Fruit
5	V	Banana
4	K	Mango
3	H	Kiwi
2	G	Guava
1	J	Apple

Directions (71-73):

71) Answer: D

72) Answer: D

73) Answer: D

$$D > F(183) > A/B > A/B(162) > E > C$$

Directions (74-78):

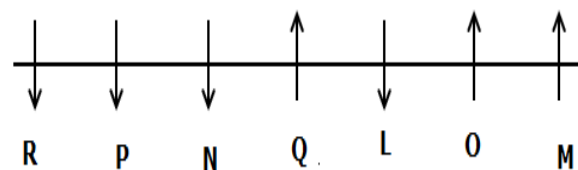
74) Answer: A

75) Answer: A

76) Answer: A

77) Answer: B

78) Answer: D

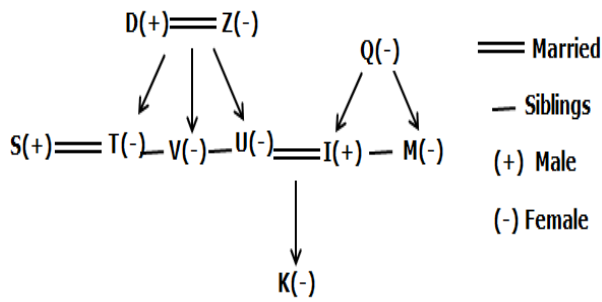


Direction (79-81)

79) Answer: D

80) Answer: D

81) Answer: E



Directions (82-86):

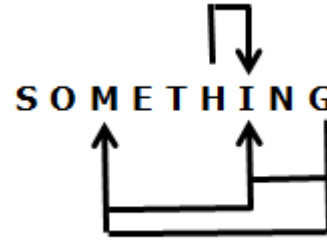
- 82) Answer: D
- 83) Answer: A
- 84) Answer: B
- 85) Answer: B
- 86) Answer: B

	Person	Jams
September 2	W	Conserve
September 19	U	Marmalade
October 2	Z	Preserves
October 19	V	Butter
November 2	X	Compote
November 19	Y	Jelly

- 87) Answer: C
- 54938267
- 42826046

- 88) Answer: E
- PREVIOUS
- OQFUJPVR
- FJOPQRUV

- 89) Answer: D



- 90) Answer: A
- DERP

Directions (91-95):

- 91) Answer: C
- 92) Answer: D
- 93) Answer: A
- 94) Answer: D
- 95) Answer: C

Year (Age)	Persons
1945 (76)	C
1958 (63)	F
1968 (53)	E
1976 (45)	H
1985 (36)	A
1989 (32)	G
1994 (27)	B
1998 (23)	D

Direction (96-100):

- 96) Answer: C
- 97) Answer: D
- 98) Answer: B
- 99) Answer: C
- 100) Answer: E

Words	Codes	Words	Codes
Tweety	Ad	Tom	Mt
Jerry	Lt	Popeye	Xz
Felix/ catman	Pn/gh	Rob	oz
Mickey	Vn		

 **guidely**

IBPS PO Prelims 2021

Free Memory Based Mock Test – 2

Held On 4th Dec 2021

Take Online Mock Test & Also
Download it as PDF

Click the Link Given or Visit : www.guidely.in



Note: You can also take this Memory Based Questions asked in IBPS PO Pre 2021 Exam Held on 04th Dec as Online Mock Test, [Click Here to Take Online Mock Test](#)

Grand Bundle PDF Course 2021

Exams Covered:

SBI Clerk | SBI PO | IBPS RRB PO |
IBPS RRB Clerk | IBPS PO | IBPS Clerk

Separate PDF Course for All Major Bank pre + Mains Exams

- Total No. of Ques: 40,000+
- Question in Bilingual (Eng & Hindi)
- Answers With Detailed Video Solution
- Provides you 50 days Study Planner for each exams
- Covers All Types of Questions in Each Topic
- Questions in Exact Exam Level
- All Our PDFs are Downloadable
- 100% Satisfaction Assured & It's Worthy for your money
- Download as PDF & also take Quiz with Timer

 **guidely**

Grab It Now